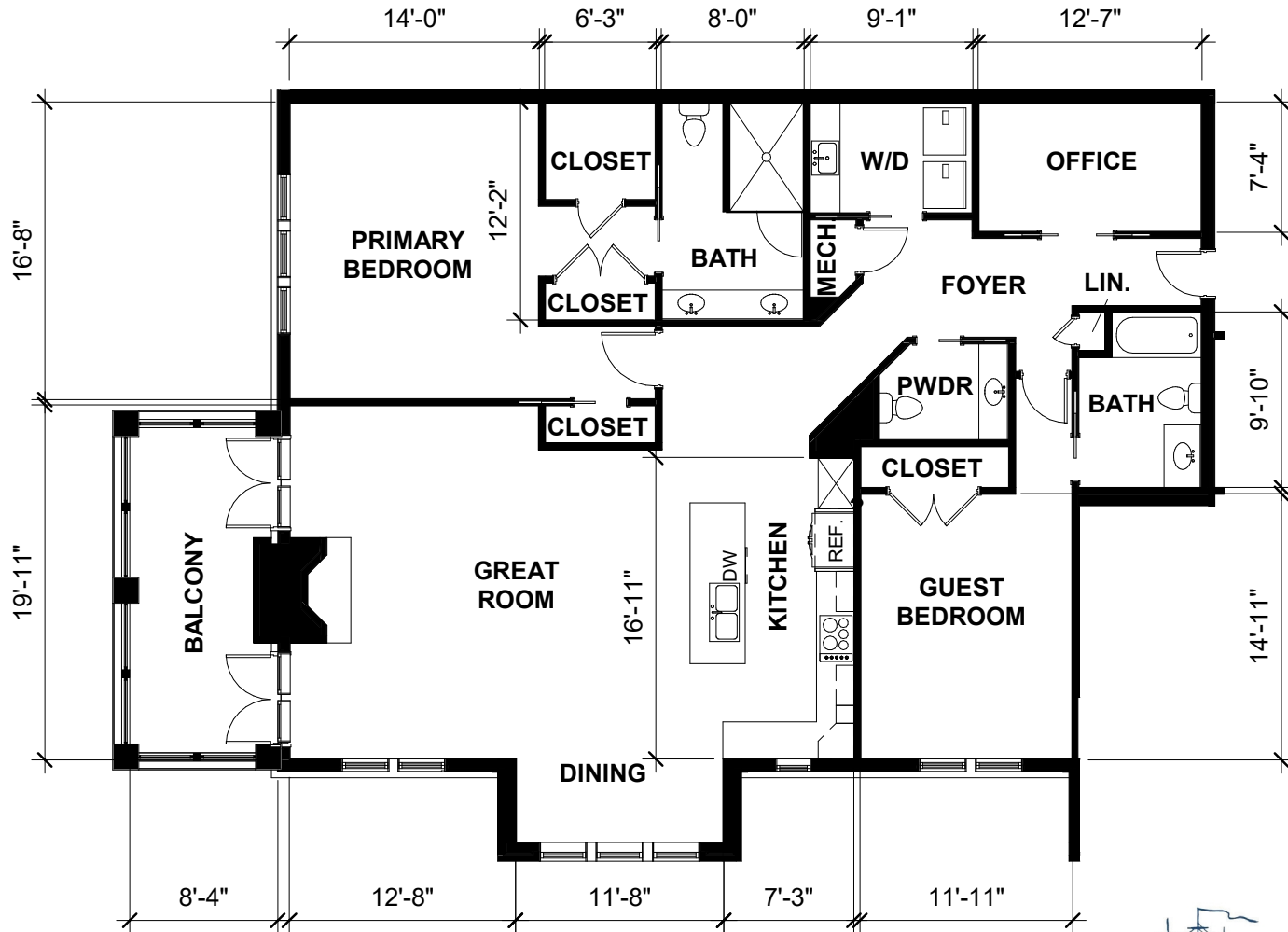


The Seacrest | VILLA APARTMENT HOME

Two Bedroom/Two Bath/Office plus Screened Porch | 1,820 sq. ft.

This plan is a general representation only. Final square footage and layout may vary.



**WILLIAMSBURG®
LANDING**

ANCHOR COVE *at* **WILLIAMSBURG LANDING**

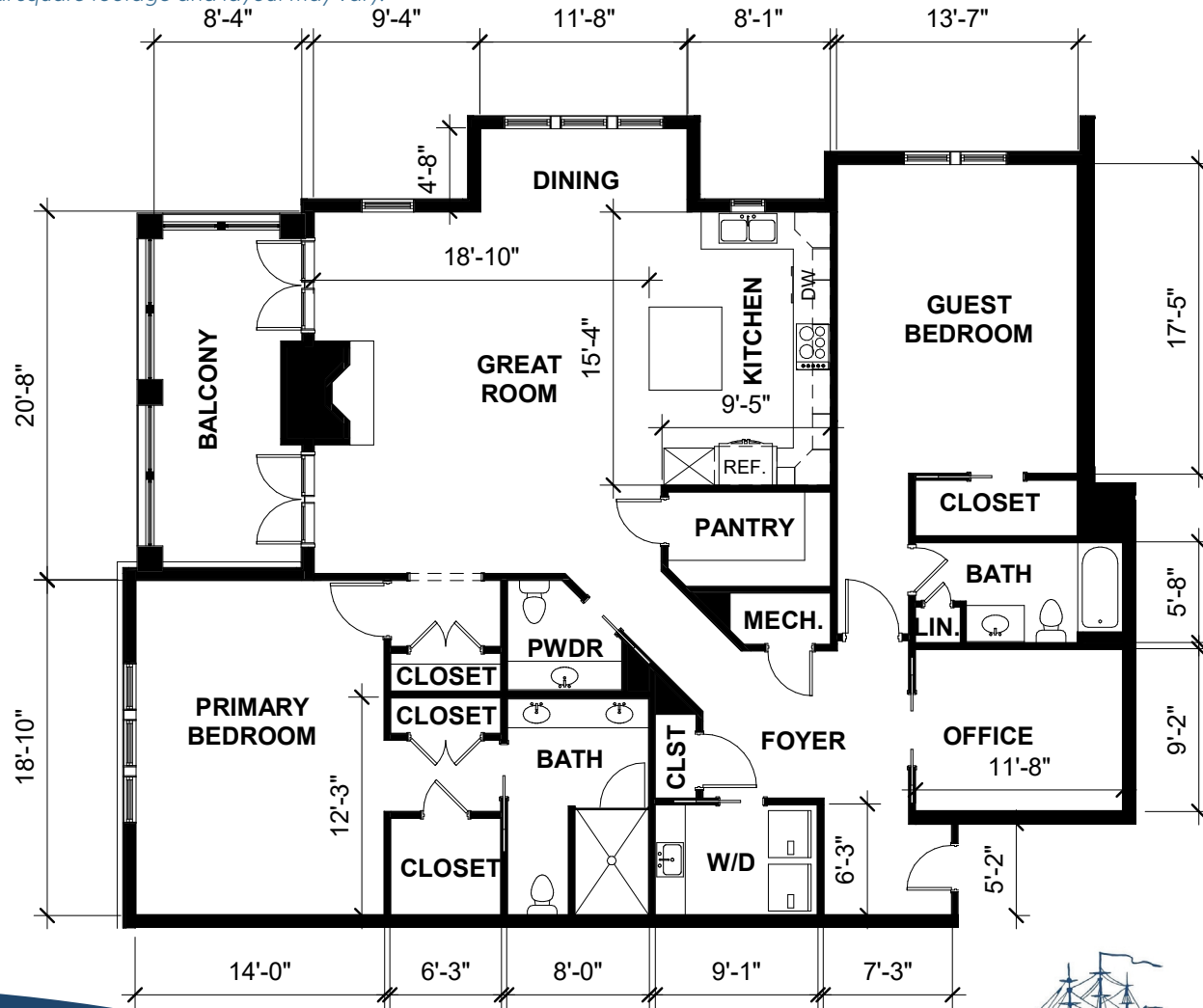
5700 Williamsburg Landing Dr., Williamsburg, VA 23185 | 1-800-554-5517 | WAnchorCove.org



The Soundings | VILLA APARTMENT HOME

Two Bedroom/Two Bath/Office plus Screened Porch | 1,950 sq. ft.

This plan is a general representation only. Final square footage and layout may vary.



**WILLIAMSBURG®
LANDING**

ANCHOR COVE *at* **WILLIAMSBURG LANDING**

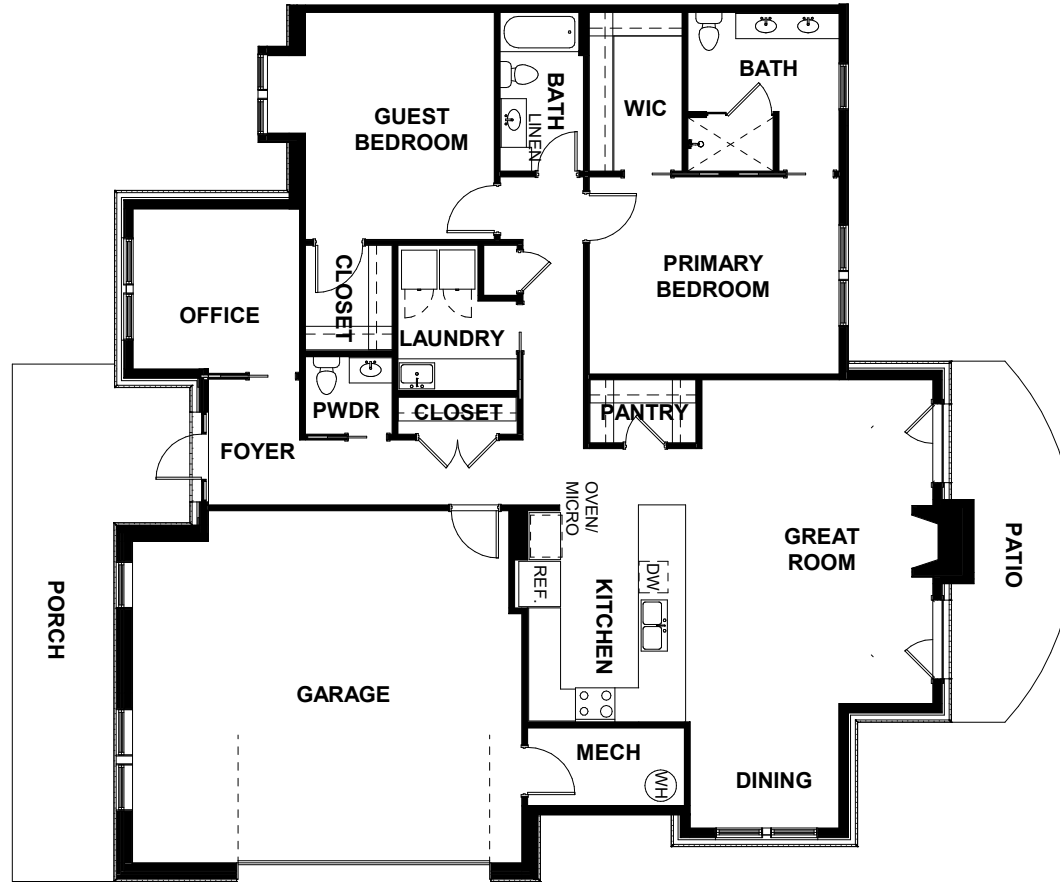
5700 Williamsburg Landing Dr., Williamsburg, VA 23185 | 1-800-554-5517 | WAnchorCove.org



Cape Ann | TERRACE HOME

Two Bedroom/Two Bath/Office with Screened Porch plus Two-Car Garage | 1,680 sq. ft.

This plan is a general representation only. Final square footage and layout may vary.



ANCHOR COVE *at* WILLIAMSBURG LANDING

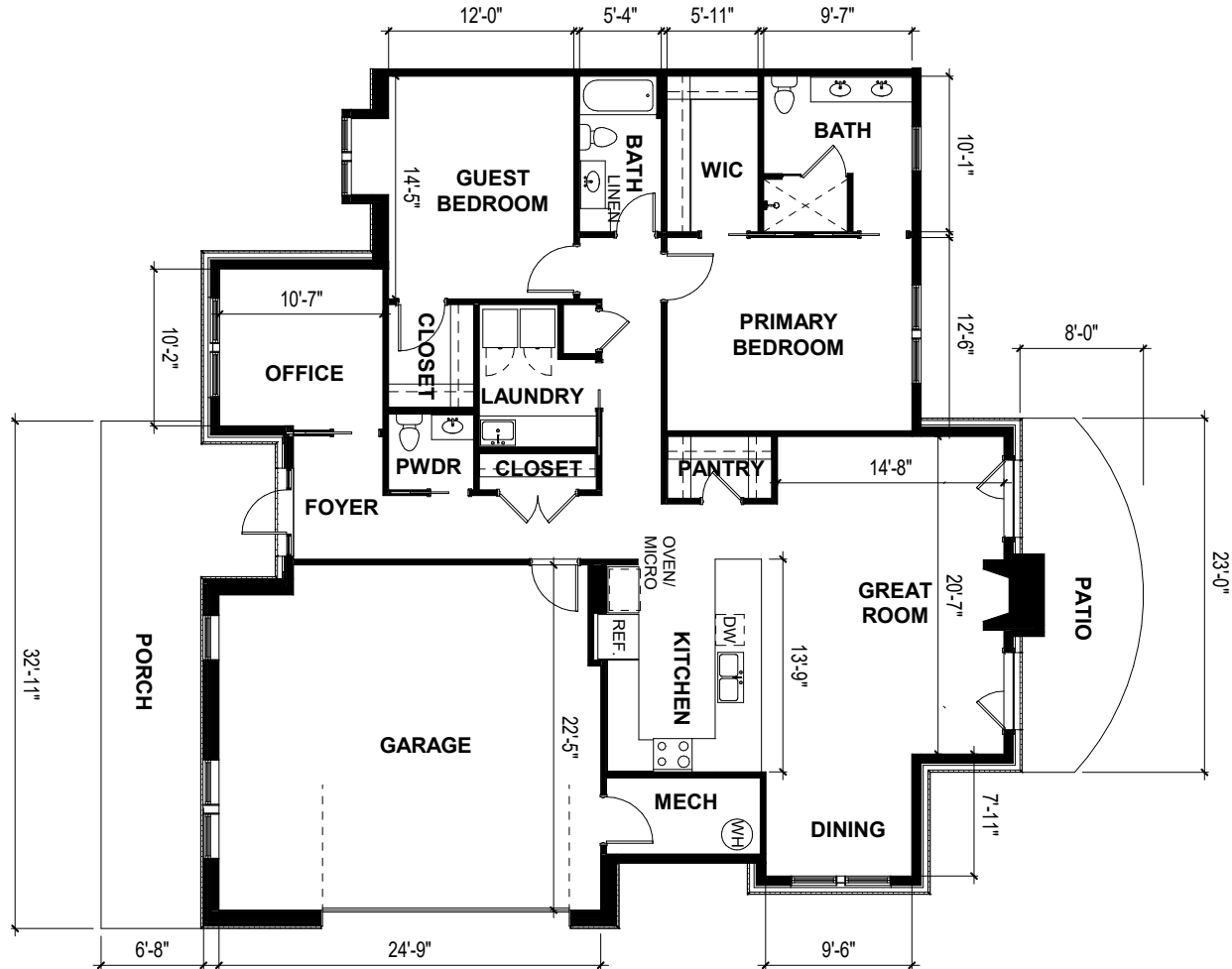
5700 Williamsburg Landing Dr., Williamsburg, VA 23185 | 1-800-554-5517 | WAnchorCove.org



Cape Ann | TERRACE HOME

Two Bedroom/Two Bath/Office with Screened Porch plus Two-Car Garage | 1,680 sq. ft.

This plan is a general representation only. Final square footage and layout may vary.



**WILLIAMSBURG®
LANDING**

ANCHOR COVE *at* **WILLIAMSBURG LANDING**

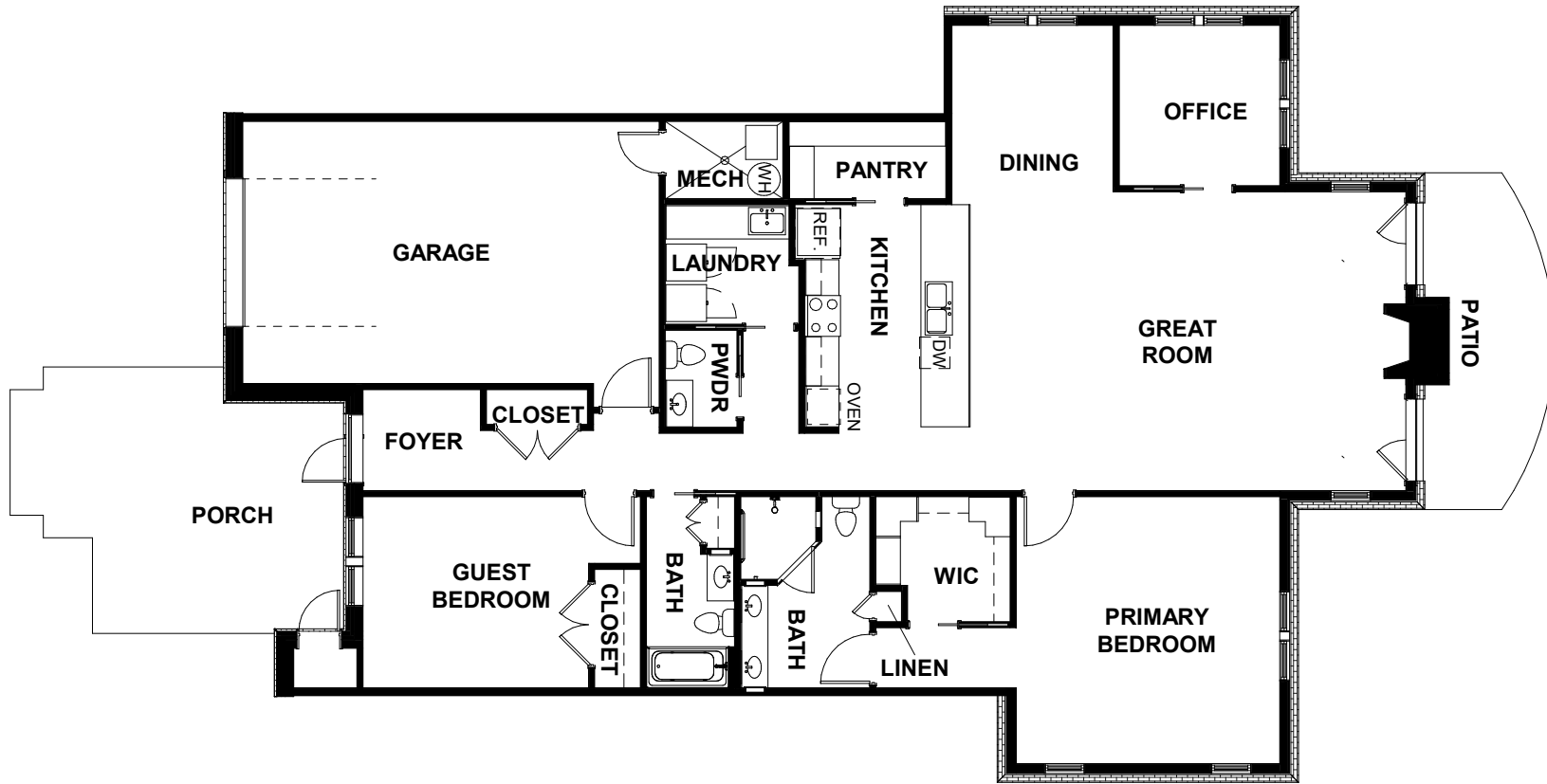
5700 Williamsburg Landing Dr., Williamsburg, VA 23185 | 1-800-554-5517 | WAnchorCove.org



Cape May | TERRACE HOME

Two Bedroom/Two Bath/Office with Screened Porch plus One and One-Half Car Garage | 1,925 sq. ft.

This plan is a general representation only. Final square footage and layout may vary.



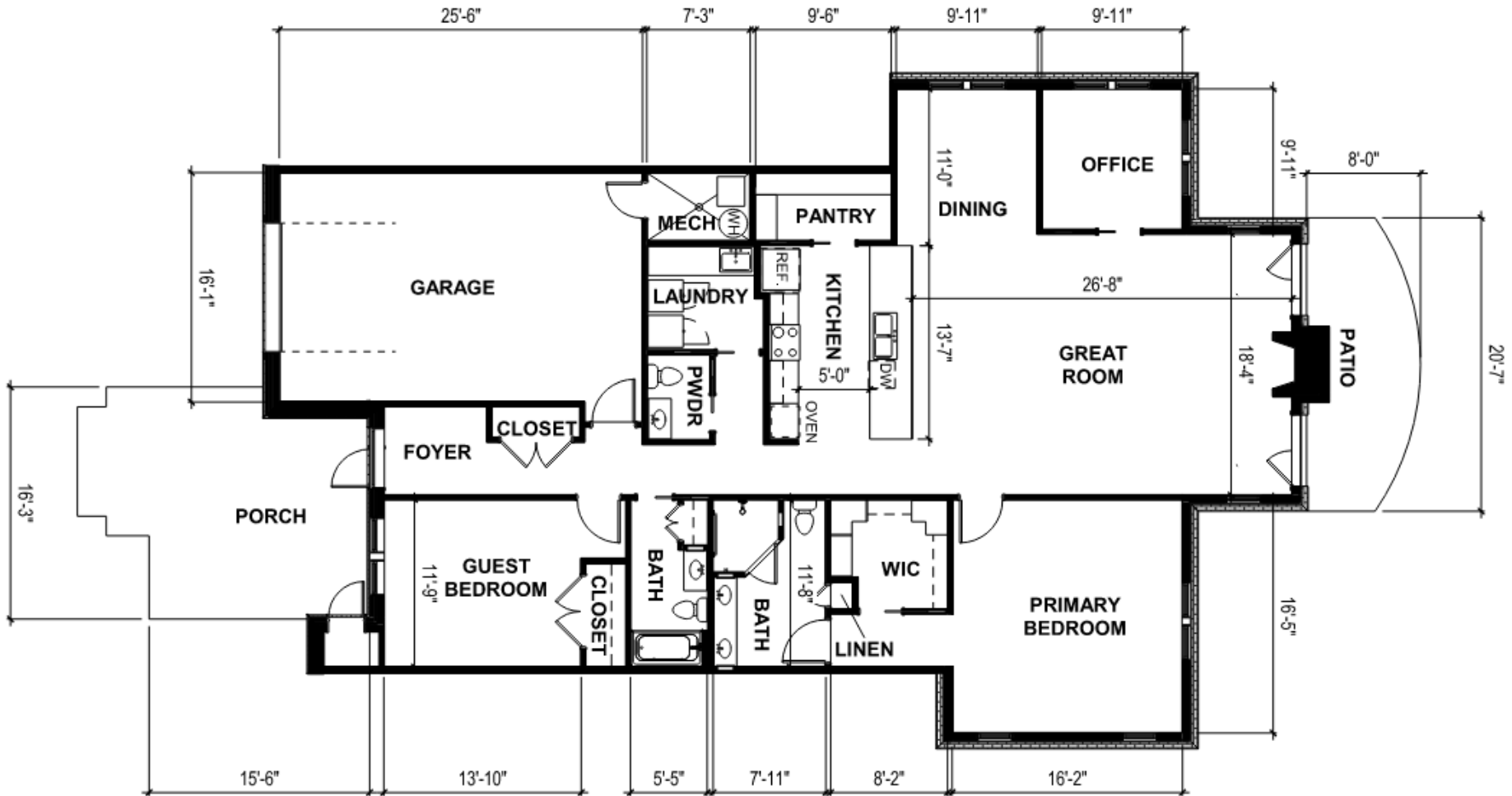
ANCHOR COVE *at* WILLIAMSBURG LANDING

5700 Williamsburg Landing Dr., Williamsburg, VA 23185 | 1-800-554-5517 | WAnchorCove.org



Cape May | TERRACE HOME

Two Bedroom/Two Bath/Office with Screened Porch plus One and One-Half Car Garage | 1,925 sq. ft.



ANCHOR COVE *at* WILLIAMSBURG LANDING

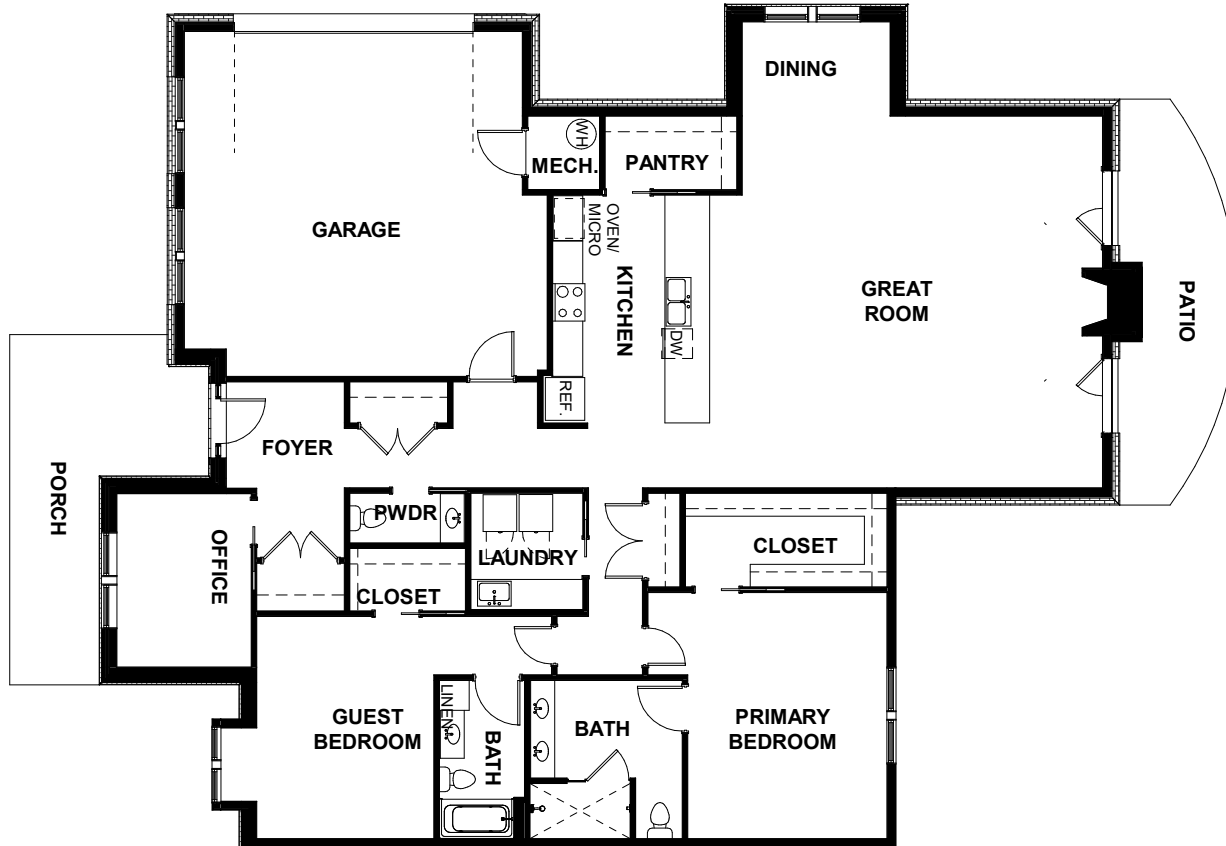
5700 Williamsburg Landing Dr., Williamsburg, VA 23185 | 1-800-554-5517 | WAnchorCove.org



Cape Charles | TERRACE HOME

Two Bedroom/Two Bath/Office with Screened Porch plus Two-Car Garage | 2,184 sq. ft.

This plan is a general representation only. Final square footage and layout may vary.



ANCHOR COVE *at* WILLIAMSBURG LANDING

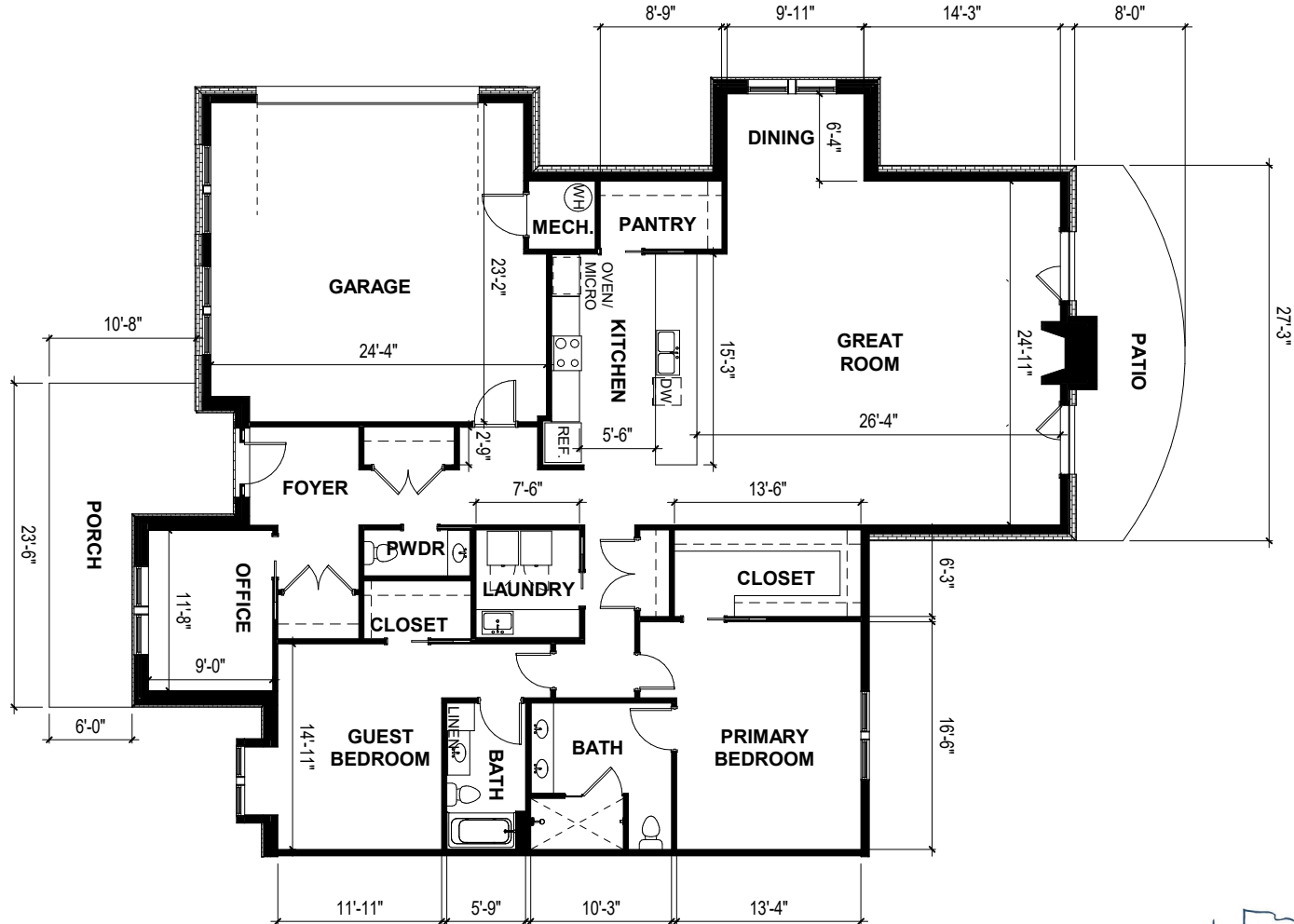
5700 Williamsburg Landing Dr., Williamsburg, VA 23185 | 1-800-554-5517 | WAnchorCove.org



Cape Charles | TERRACE HOME

Two Bedroom/Two Bath/Office with Screened Porch plus Two-Car Garage | 2,184 sq. ft.

This plan is a general representation only. Final square footage and layout may vary.



**WILLIAMSBURG®
LANDING**

ANCHOR COVE *at* **WILLIAMSBURG LANDING**

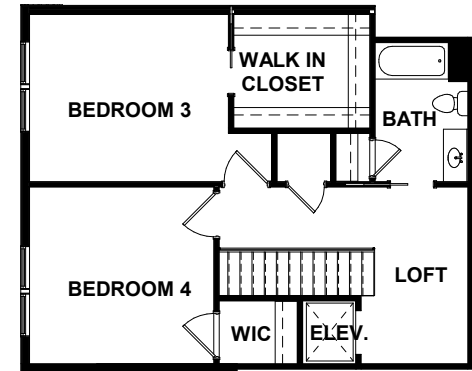
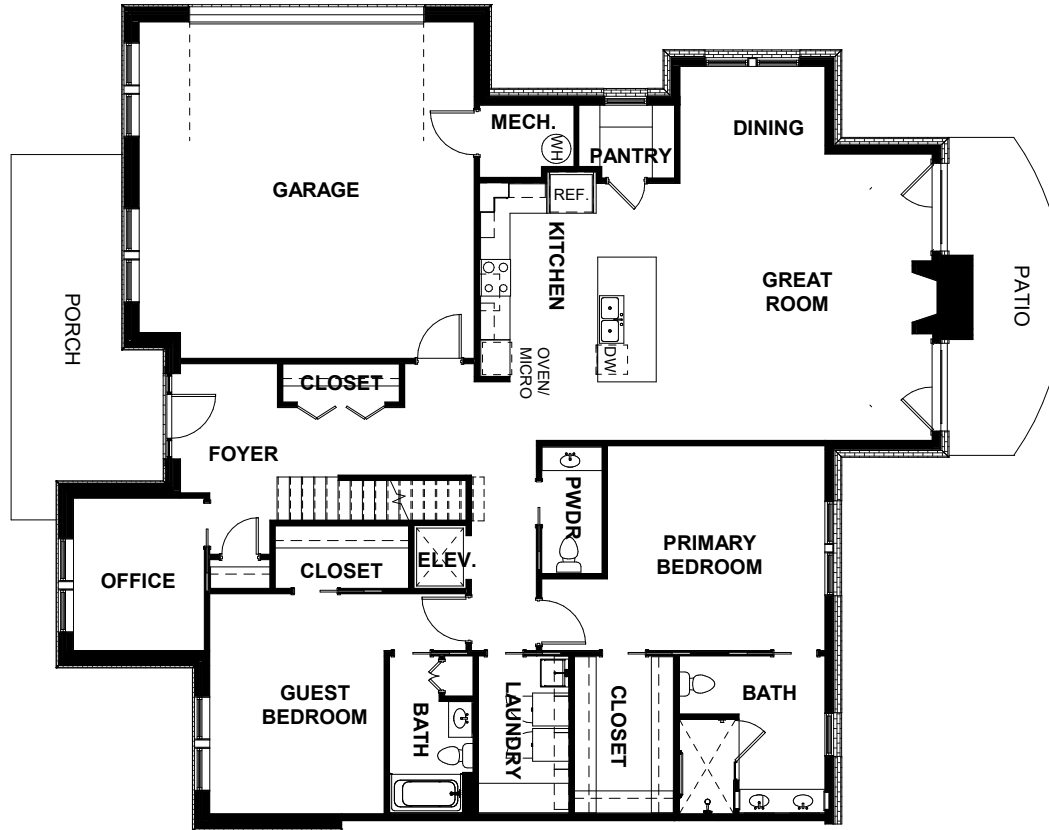
5700 Williamsburg Landing Dr., Williamsburg, VA 23185 | 1-800-554-5517 | WAnchorCove.org



Cape Henry | TWO-STORY TERRACE HOME

Four Bedroom/Three Bath/Office with Screened Porch plus Two-Car Garage | 2,400 sq. ft.

This plan is a general representation only. Final square footage and layout may vary.



**WILLIAMSBURG®
LANDING**

ANCHOR COVE *at* **WILLIAMSBURG LANDING**

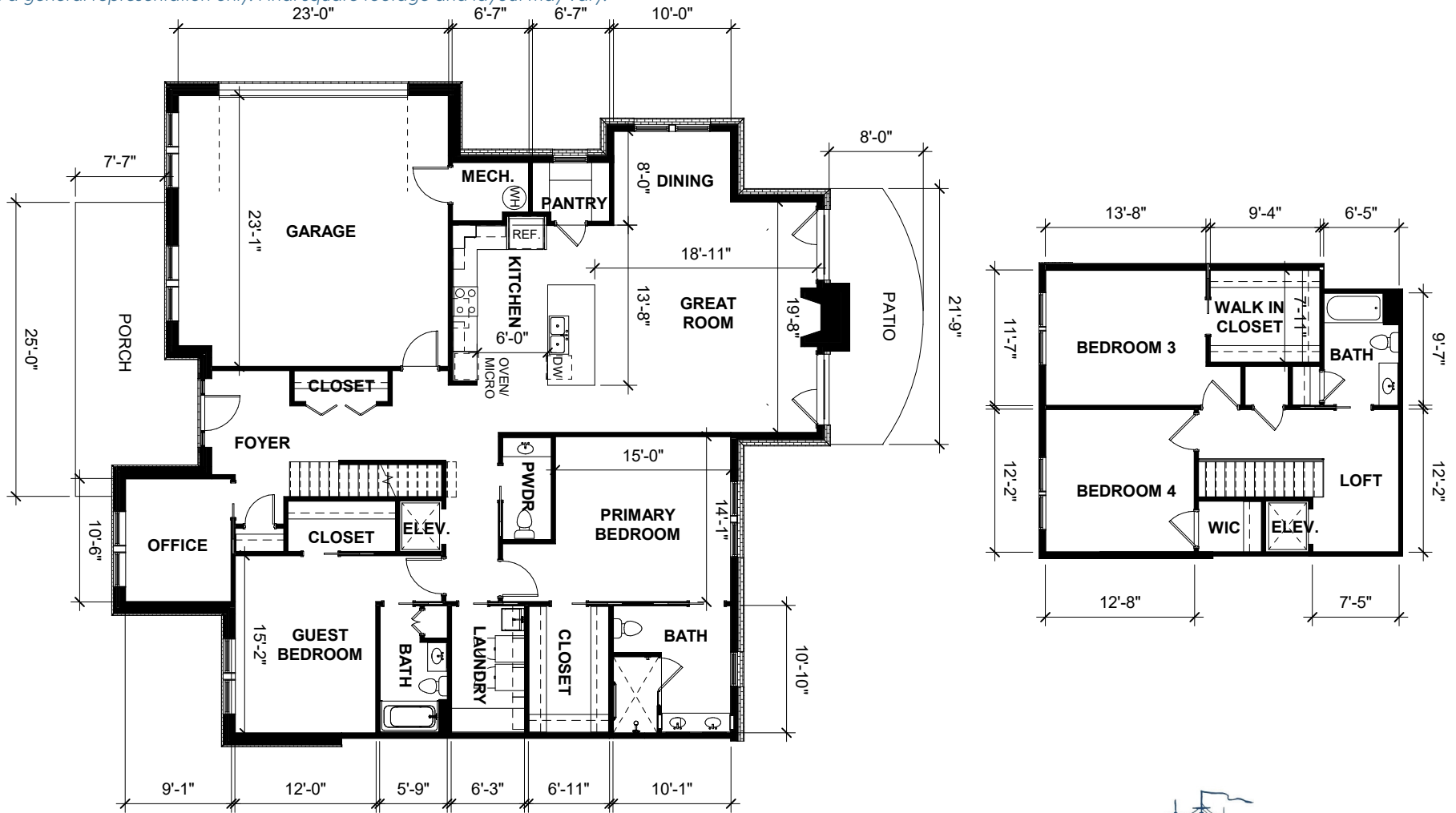
5700 Williamsburg Landing Dr., Williamsburg, VA 23185 | 1-800-554-5517 | WAnchorCove.org



Cape Henry | TWO-STORY TERRACE HOME

Four Bedroom/Three Bath/Office with Screened Porch plus Two-Car Garage | 2,400 sq. ft.

This plan is a general representation only. Final square footage and layout may vary.



**WILLIAMSBURG®
LANDING**

ANCHOR COVE *at* **WILLIAMSBURG LANDING**

5700 Williamsburg Landing Dr., Williamsburg, VA 23185 | 1-800-554-5517 | WAnchorCove.org

